



**Animal Intelligence Software, Inc.**  
3505 NW Anderson Hill Road, Suite 204  
Silverdale, WA 98383  
(360) 692-7736 FAX (360) 692-2629

Copyright © 1998-2003, Animal Intelligence Software, Inc.  
All Rights Reserved Worldwide

## **Installing Advantage Database Server version 6.2**

### **Introduction:**

This document contains all instructions needed to install the Advantage Database Server version 6.2 found on the your **AI 2.7** Installation CD. The ADS version 6.2 validation codes that are needed to complete your installation can be found on the back of your **AI 2.7** jewel case. If you can not find these codes, call Animal Intelligence Support at (866) 413-3871 or e-mail [support@animalintelligence.com](mailto:support@animalintelligence.com).

### **Section 1 – Preparations Before You Begin**

1. Verify that all workstations have exited all AIS applications, including the **Fax Server, LedgerLinx, Medical Record Viewer, Data Maintenance, and AI Data Diagnostics**. If you are using Citrix or Microsoft Terminal Server in a WAN environment, all users at all locations must be logged out of all **AI** applications, as well as their Citrix/Terminal Server sessions.
2. If you are installing a new server and the existing server is already running your licensed copy of ADS, you will need to stop the existing copy of ADS before you will be able to install it on the new server. ADS security prevents you from running two copies of ADS with the same serial number on the same network.
3. The new server must be connected to a network for ADS to be installed and tested. The network should be running either TCP/IP or IPX but not both. If you plan to use TCP/IP, ensure that IPX is not installed on any workstations on the network.

### **Section 2 - Server Upgrade & Configuration**

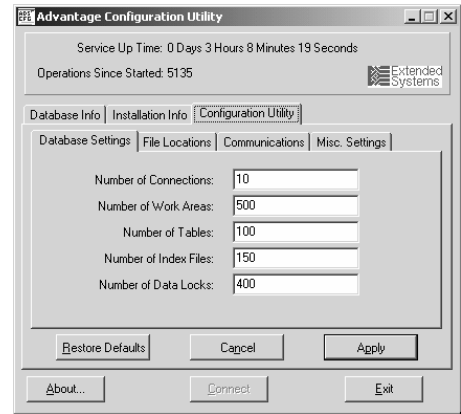
#### **Section 2A – Install ADS Upgrade (Windows):**

1. Verify that all workstations have exited all AIS applications.
2. On the old server, go to **Services** (the location varies between NT and 2000) and stop the Advantage Database Server (ADS) service.
3. You may want to wait until you are sure the new server is function correctly before uninstalling ADS. If you want to uninstall ADS from the old server at this time perform the following:
  - a) Go to **Start > Programs > ADS Service Uninstall** and follow the prompts to uninstall.

- b) To complete the uninstall process go to **Start > Settings > Control Panel** and click on **Add/Remove Programs**. Select the **Advantage Database Server** and then click the **Add/Remove** button. Follow the prompts to complete the uninstall.
4. You may now install ADS on the new server. Insert the Animal Intelligence 2.7 CD provided in the CD drive of the server. It will auto load attempting to install **AI**. At the first screen, select **Cancel** to stop the installation. Confirm by clicking **Yes** at the next screen.
5. Open **Windows Explorer** and browse to the CD drive letter. You will notice that this CD contains the folder **ADS**. Open this folder and you will notice other folders, one of these folders 'DOM\_NT' contains the *Setup.ex* file. Double click this file and you will note the ADS installation application starts. Proceed through the introductory windows that appear on the screen.
6. Once the Advantage Database Server files have been copied, the **Product Information** window prompts you to enter the Advantage Database Server serial number, validation code, and the name of the registered owner. Enter the Advantage Database Server serial number and validation code provided on the back of the upgrade CD jewel case. Radio buttons exist to choose the **Advantage Database Server Service Startup** option. If you are unsure of which startup option to choose, the default **Automatic** is recommended.
7. You will be prompted to choose what ANSI character set you wish to use. For most this will be English (American) but you may choose another if appropriate. When the screen asks if you want to view the *Read Me*, select **No**. Then follow the rest of the prompts to **Finish**.
8. Continue to Section 2B – Configure ADS(*Windows*).

**Section 2B – Configure ADS (*Windows*):**

1. ADS has now been installed but it must be configured. Click on **Start > Programs > Advantage Database Server > ADS Configuration Utility**. Then select the **Configuration Utility** tab. You may need to edit the settings next to each item depending your number of licensed users. See the following table for these settings:



**ADS Configuration Settings Table**

# of licenses	5	10	15	25	50
<i>Users</i>	5	10	15	25	50
<i>Connections</i>	40	80	120	200	400
<i>Work Areas</i>	1000	2000	3000	5000	10,000
<i>Tables</i>	200	200	200	200	200
<i>Index Files</i>	300	300	300	300	300
<i>Data Locks</i>	400	400	400	400	400

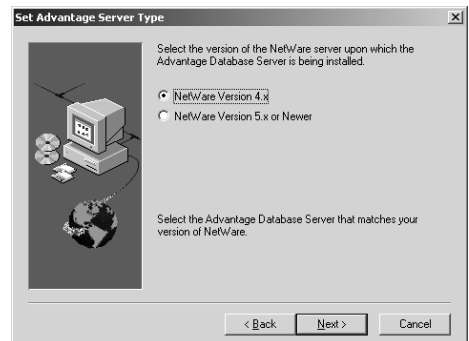
2. Select **Apply** and then **Exit**. Now you must go back to **Service**. Stop the Advantage Database Server service that should be running and set to **Automatic**. Once it has stopped, you will need to restart it.

3. Go back to the ADS Configuration Utility and look at the **Database info** tab. Verify that the settings you entered in Step 1 above are displayed in the *Configured* column.
4. Skip to Section 3.

**Section 2C – Install ADS Upgrade (Novell):**

**Review the Readme.txt files contained in ADS/dom\_nlm folder of the upgrade CD for important notes concerning your version of NetWare.**

1. Verify that all workstations have exited all AIS applications.
2. **You must verify the current version of Novell installed and running on your server BEFORE beginning the ADS installation/upgrade!**
3. You must be logged into NetWare from your workstation with administrative privileges to perform this upgrade.
4. Once everyone has exited **AI**, confirm this from the Novell server. Start the Advantage NLM screen as described above, then look at the *Current* column of the *Users/Connection* row. This should show 0/0. If not, someone is still using **AI**; you'll have to go ferret them out before continuing.
5. Again from the Novell server screen with the Advantage NLM screen displayed, press **F5**. A dialog will pop up asking if you really want to unload Advantage; press **Y**. You will be returned to the system console.
6. Insert the Animal Intelligence 2.7 CD in the workstation's CD drive now. Click **Start > Run**. Choose **Browse** then navigate to the CD drive icon, open the ADS folder, open the appropriate version subfolder (Either *dom\_nlm* for Domestic US and Canada, or *int\_nlm* for International). Then highlight *Setup.exe* and click **Open**, then click the **OK** button in the **Run Dialog**.
7. Run the installation program. Proceed through the introductory windows that appear on the screen. Select the version of NetWare that ADS is to be installed on. It is important that the correct version of NetWare be selected. For Netware Version 4.x ensure you select "*NetWare Version 4.x*". If "*NetWare Version 5.x or Newer*" is selected, the ADS for NetWare 6 will be installed. This ADS NLM has support for IP and multiple processors.



**Note: The NLM installed for Netware 5.x or Newer will not load on a NetWare 3.x or 4.x server.**

8. Once the ADS files have been copied to the NetWare server, the **Product Information** window prompts you to enter the ADS serial number, validation code, and the name of the registered owner. Enter the ADS serial number and validation code provided on the back of the **AI 2.7** CD jewel case.
9. Continue to Section 2D – Configure ADS (*Novell*).

### Section 2D – Configure ADS (Novell):

1. Now you will need to configure the settings to match your user license count.
2. Locate the *ADS.CFG* file on the server and open it in a text editor. Change the settings to coincide with those of the *ADS Configuration Setting Table* on page 5, then save the file.
3. Back at the Novell server type `LOAD SYS:\ads\ads.NLM` and press **Enter** to restart Advantage.
4. Continue to Section 3.

### Section 3 – Moving the AI Database to the new server

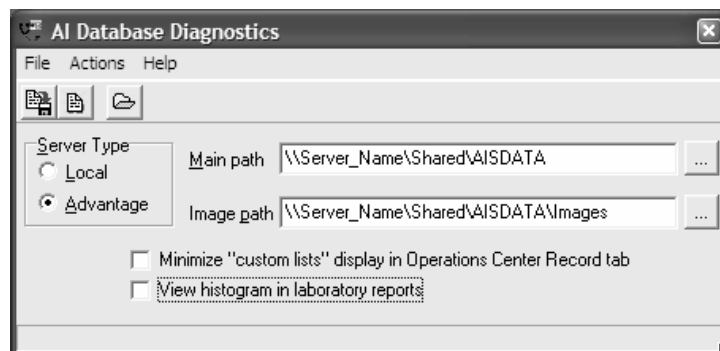
Once ADS has been installed on the new server, you now need to copy the main Animal Intelligence database from it previous location to the new server.

1. Create a Shared folder: Generally speaking your new server may be partitioned with a C: System drive (where ADS is installed) and possibly a D: Data drive. If partitioned create a folder called 'Shared' in the root of the D: or data drive (if you are not partitioned create the 'Shared' folder in the root of the C: drive). Share this folder and ensure all users have FULL rights to this folder.
2. Copy the AISDATA folder with all of its contents and subfolders (AI main database folder) from it's existing location on either the old server or workstation to the new Shared folder just created.

### Section 4 – Configuring AI at each workstation

Once the database has been moved to its new location it is necessary to tell AI where the database is now located.

1. On each workstation, click on **Start > Programs > AIS > AI Data Diagnostics**.



2. For the **Main Path**, browse to the AISDATA folder that was copied previously.
3. For the **Image Path**, browse to the folder where your AI images are being stored, normally a subfolder of AISDATA.
4. Ensure that the **Server Type** is set to **Advantage**.
5. Click on **File** then **Save Settings**.
6. Click on **Actions** then **Test Connection**.
7. Open AI as you normally would to ensure it opens without errors.